

What is Social Security?



Securing today and tomorrow

Social Security was created

to promote the economic security of the nation's people



1930s Great Depression
America facing the worst economic crisis of modern times



August 14, 1935
President Roosevelt signs Social Security Act as part of the *New Deal*



Designed to pay retired workers age 65 or older a continuing income after retirement.



1939
Survivors Insurance for families of a deceased worker



1956
Disability Insurance for disabled workers and their family members



1965
Medicare providing health insurance for our beneficiaries



1972
Supplemental Security Income needs-based program funded by the U.S. Treasury general fund to provide payments to people with limited income and resources who are age 65 or older, blind, or disabled. Children with disabilities can get SSI, too.

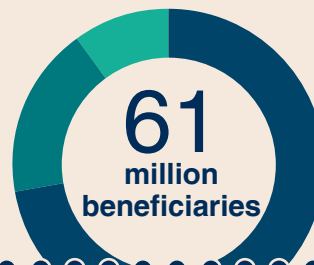
Who do we serve?



1 in 6 Americans currently receive a Social Security benefit



1/3 are Disabled, Dependents, or Survivors



43.9 million retired workers and dependents

10.7 million disabled workers and dependents

6 million survivors of deceased workers

The most successful anti-poverty program in our country's history